

ACS 100 Series

“Thru-beam sensor for counting small objects”



- Counting objects with a minimum size of 1 mm in the 55 x 34 mm detection area
- Easy installation and use as the transmitter and receiver are in one housing
- PNP switching output
- Status LED
- Robust structure
- IP67 protection
- Suitable for both metal and non-metal parts

ACS series frame type counting sensors with high sensitivity, compact structure, easy installation and use are designed for counting freely-falling small objects.

The product consists of a receiver and transmitter mounted on a frame. Thanks to this structure consisting of one housing, there is no need to adjustment of the receiver and transmitter separately. This provides a lot of convenience for the user during installation and use.



Application Areas

- Agriculture Industry (eg: counting seeds)
- Pharmaceutical and chemical industry
- Production and packaging lines
- Packaging machines
- Storage and distribution centers etc.

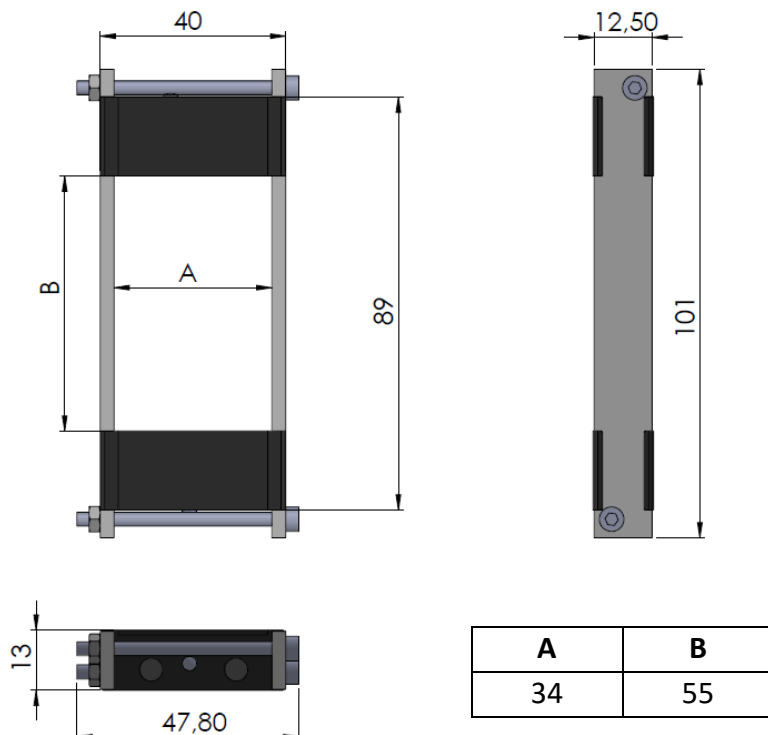
ELECTRICAL DATA

Detection / Sensor Type	Transmitter-Receiver / Thru-beam sensor
Wave length	940 nm
Sensing Area	34x55 mm
Minimum detectable object	1 mm
Output	PNP switching output
Contact Capacity	≤200mA
Contact Time	20 ms (standard) Different values from 0. 1 ms to 2 sec. can be selected (must be specified in the order code)
Beam separation	2 mm
Response time	1 ms for objects between 1mm and 2mm 0.33 ms for objects larger than 2mm
Off delay	0 s ... 5 s
Initialization time	0,3 s
Supply voltage	10...30 VDC
Current consumption	<75mA
Short circuit protection	Yes
Reverse polarity protection	Yes
Switching frequency	4KHz max.
Working environment light resistance	5.000lx (effected by intense sunlight)
Electrical connection	3x0,14 mm ² PUR cable (optional others)

MECHANICAL AND ENVIRONMENTAL DATA

Dimensions (W x H x D)	101 mm x 47,8 mm x 13 mm
Indicator	2 pcs LED indicator (On the receiver and transmitter)
Protection	IP67
Operating Temperature	-40°C...+60°C
Storage Temperature	-40°C...+60°C
Material	Plastic and stainless steel
Weight	~75g

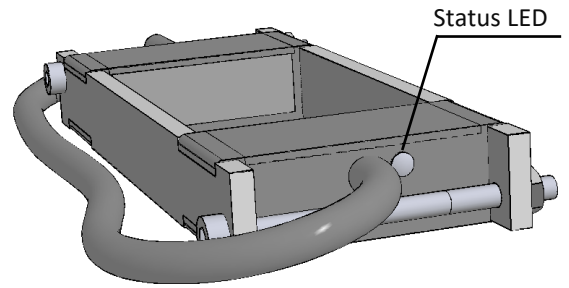
MECHANICAL DIMENSIONS (mm)



LED FUNCTION

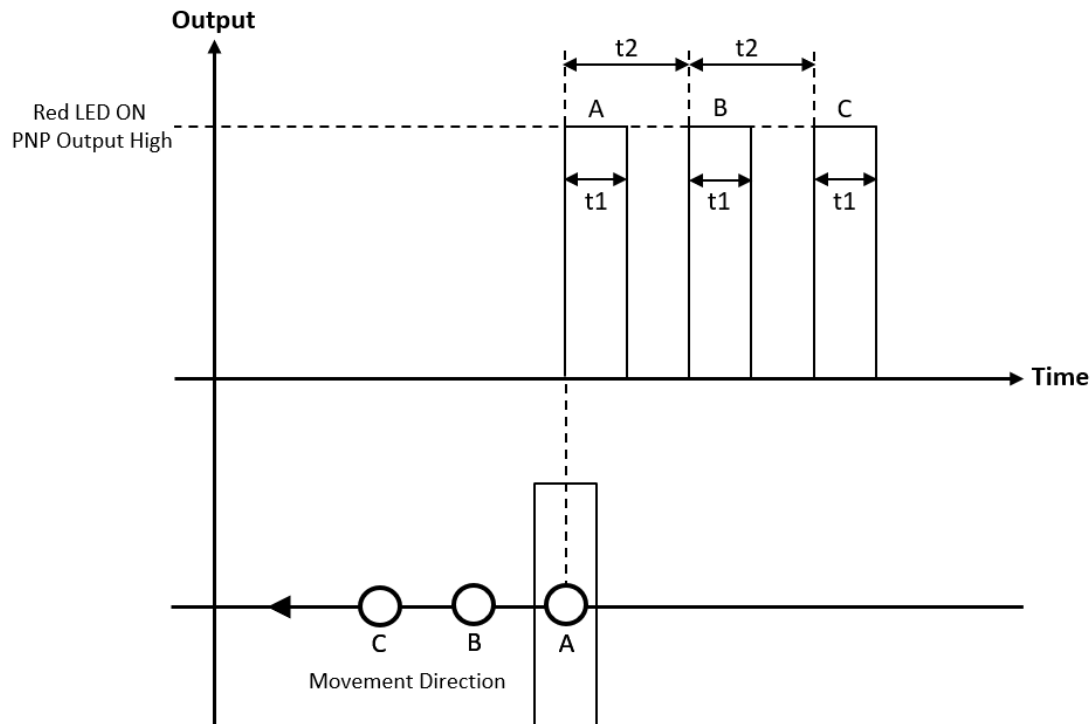
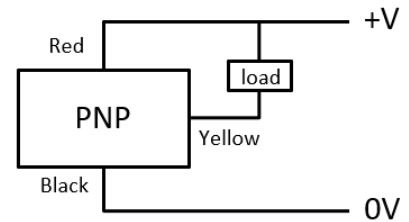
There are 2 LED indicators on the Receiver and Transmitter heads.

Led Color	Description
Off	No energy
Red	The sensor is dirty
Blue	There is energy
Red flash (as long as contact time)	Counting object



ELECTRICAL CONNECTION

SIGNAL	CABLE COLOR
+V	Red
Control Output (PNP)	Yellow
0V	Black



ORDER CODE

Model		Output Type		Electrical Connection	
ACS 100	- XX x XX	PNP: PNP	XXX	3M : 3 meters cable	XX
	Detecting Area		Contact Time	*Optional others	
	55x34: 55x34 mm		20ms : 20ms (standard)		
			*Different values from 0. 1 ms to 2 sec. can be selected.		