

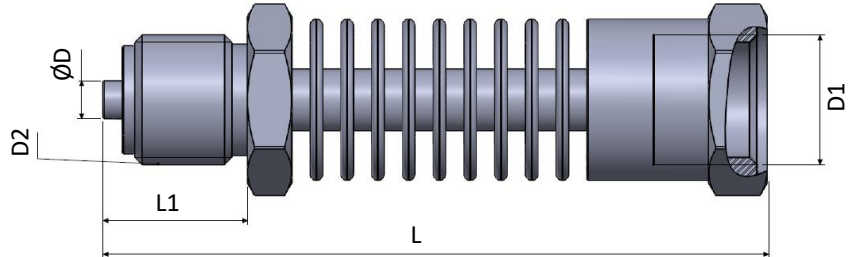
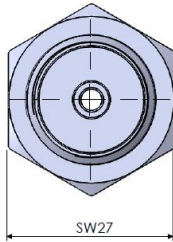


Pressure transmitter cooling elements are products that cool the body of the pressure transmitters in high temperature applications and protect them from temperature. It can be used by connecting several products in a row according to the temperature. It can be used in different connections with different inlet / outlet dimensions.

- Suitable for temperatures up to 250°C
- Can work with pressures up to 400 bar
- G1/2 or G1/4 connections

TECHNICAL FEATURES	
Operating Temp.	250°C max.
Housing	Stainless steel 316L
Mechanical Connection	G1/4F-G1/2M, G1/4F-G1/4M, G1/2F-G1/2M, G1/2F-G1/4M
Weight	~280 grams
Max Pressure	400 Bar

### MECHANICAL DIMENSIONS (mm)



	D1 (inch)	D2 (inch)	L (mm)	L1 (mm)	ØD (mm)
G1/4F – G1/2M	1/4	1/2	108	23,5	6,15
G1/2F-G1/2M	1/2	1/2	108	23,5	6,15
G1/2F-G1/4M	1/2	1/4	100	15	5
G1/4F – G1/4M	1/4	1/4	100	15	5

### ORDER CODE

Model

**BSS** - **26** - **XXX**

Body Diameter

26: 26 mm

Mechanical Connection

G1/4F – G1/2M  
G1/2F-G1/2M  
G1/2F-G1/4M  
G1/4F – G1/4M